

# CONNECTION

chi alpha

VOLUME 5 ISSUE 3 WINTER 2013

**1** **MORE THAN 1,000 VOLUNTEER TO "GIVE A YEAR"**  
Students from all over the country flock to Fort Worth, Texas for the third World Missions Summit.

**4** **COMMITTING TO GO**  
A college senior put his name in a bucket at TWMS3 to give a year. His mission field: the secular university.

**5** **FEEDING THE HUNGRY**  
Chi Alpha and Convoy of Hope partner with the Feed One program to feed children around the world.

**6** **IMAGINE CONFERENCE CHALLENGES CHI ALPHA STAFF TO DREAM BIG**  
Chi Alpha staff gather for a day of spiritual refreshment, visionary inspiration and fun.

## TWMS3

*More than 1,000 volunteer to give a year*

As the third World Missions Summit concluded, students responded, with 1,148 young men and women coming forward to declare their intent to give one year of their lives to missions.

Held December 28-30 at the Fort Worth (Texas) Convention Center, the World Missions Summit was a cooperative effort between Assemblies of God World Missions and Chi Alpha, the AG ministry to college students.

Themed "Because I Care," the summit gave students and other attendees an opportunity to experience what life is like in different countries, worship, eat with a missionary and pray for the nations.

Throughout the conference, the regions of Africa, Northern Asia, Asia Pacific, Europe, Eurasia, North America, Latin America and the Caribbean set up interactive encounters known as Windows to the World so students could experience the smells, textures, noises and sights of that part of the world and learn about opportunities for missions.

CONTINUED ON PAGE 3 >



**U.S. MISSIONS**  
*...that none perish*

## CONFERENCE STATISTICS

- 4,153 adults attended TWMS3.
- 1,148 committed to give a year to missions.
- 284 committed to give a year in Chi Alpha.
- 3,993 students combined went through the Windows to the World.
- The offering was a total of \$46,108.
- 454 staff attended Imagine.

## SHIFTING CULTURE

### GUEST EDITORIAL BY E. SCOTT MARTIN

Very rarely do we observe a rapid shift in culture. Altering culture requires time. As Chi Alpha missionaries to university students, we are honest about the work of shifting culture. We disciple students to shift secular worldly values to the values of the Kingdom of God; views of chastity, integrity, the value of life, spending and giving are all part of what we desire to see as a cultural shift on the secular university and in our students.

And I need not remind you that we are working with the most confident (often overly self-assured) “I” culture of students we have encountered in the past two centuries. Think about it. Compare what your kids and the students entering the university come to school with in comparison to what you had; computers, smart phones, debit cards (and most likely not their money!), etc. You get the point. The cultural lense most secular students peer through is not the cultural lense of the Kingdom of God. We are working to change that; to shift culture.

On December 31, 2006, at the inaugural The World Missions Summit in Louisville, Ky., a call went forth to the student attendees to “give a year and pray about a lifetime.” That day 660 students slowly moved forward with reticence and intrepation. Students were weeping, shaking and some even convulsing at the altar as they dropped their commitment cards into the buckets. In the words of Crystal Martin, “It was the look of deer in the headlights of a freight train,” when that first call went forth.

Since that historic moment, Chi Alpha has been diligent and deliberate to develop a student culture of going, giving, praying and welcoming. And our culture has shifted. I recall the days when I would be speaking at a Chi Alpha event and request the students to complete my statement, “Every student goes,” and I would get blank stares. I have found that now, wherever I travel in Chi Alpha, students will complete the sentence, “Every student goes, every student gives, every student prays, every student welcomes.”

On December 30, 2012, another call went forward to Chi Alpha students at TWMS3 to “give a year and pray about a lifetime.” More than 1,300 came forward, the atmosphere vastly different from seven years prior. It was an atmosphere of celebration, confidence and security. As one student came forward he announced to me, “This is what we do!” Another proclaimed, “No one can stop us!” There was no intrepation or shaking observed, and the only crying I saw was from missionaries overwhelmed with joy. I observed a cultural shift. And with that realization, I truly believe we can do this if we will. What is this? The mission of Chi Alpha.

Thank you for being a culture shifter.

**E. Scott Martin serves as the National Chi Alpha Student Mission Director.**



### CHI ALPHA CONNECTION Volume 5 / Issue 3 / WINTER 2013

#### EDITOR

Dennis Gaylor

#### EXECUTIVE CHI ALPHA

Dennis Gaylor, *national director*

Curtis Cole, *administrative director*

Bob Marks, *missionary personnel director*

E. Scott Martin, *XA student mission director*

Crystal Martin, *XA internationals director*

#### SUPPORT STAFF

Karissa Jefferson, *administrative coordinator*

Delyn Cole, *project coordinator/research*

Vickie Peck, *accounting specialist*

Melanie Lynch, *missionary personnel and records coordinator*

Nathan Cole, *creative and media coordinator*

Cary Bates, *graphic designer*

*Chi Alpha Connection* is a quarterly publication of Chi Alpha Campus Ministries, U.S.A.

Assemblies of God U.S. Missions

1445 N. Boonville Ave., Springfield, Mo. 65802.

417.862.2781 x1425 • FAX 417.865.9947

WEB [chialpha.com](http://chialpha.com)

Special thanks to BGMC for funding this project.

Scriptures taken from the Holy Bible, New International Version®, NIV®, Copyright © 1973, 1978, 1984, 2011 by Biblica, Inc.™ Used by permission of Zondervan. All rights reserved worldwide. [www.zondervan.com](http://www.zondervan.com).

Scripture taken from the NEW AMERICAN STANDARD BIBLE®, Copyright © 1960, 1962, 1963, 1968, 1971, 1972, 1973, 1975, 1977, 1995 by The Lockman Foundation. Used by permission.

©2012 by Gospel Publishing House, 1445 N. Boonville Ave., Springfield MO 65802. Printed in U.S.A. All rights reserved.

All Web sites verified in February 2013.

Chi Alpha and XAi (Chi Alpha International) also conducted encounters to inform and recruit students to work with American and international students. University of Central Arkansas students, dressed up in circus and carnival costumes, paraded around the convention center urging students to attend the Chi Alpha experience focusing on the American Dream.

“The American Dream is not really what it seems,” says Jennifer Schiefer, who is on staff with the University of Central Arkansas Chi Alpha. “The American Dream is rooted in self-provision and in self-service, and you cannot start down the path of self-service and end up at the Cross.”

Those who attended the American Dream experience were ultimately asked to make a series of four life decisions in what was most important to them in life, marriage, legacy and career. At the end, they were given a new pair of glasses and asked if they were willing to trade in their life decisions for a new perspective on the American Dream.

World Missions Summit Co-Director Scott Martin says the summit wasn't only about

challenging students with the motto “give a year and pray about a lifetime,” but also helping them become selfless and more focused on loving others.

“It was about the circumcision of the hearts and minds of this present university student generation; the cutting away of the fleshliness of a self-absorbed culture,” Martin says. “It was about every participant walking away with a knowledge of their responsibility to fulfill Jesus’ mandate to reach the lost around the world.”

During the Summit, Chi Alpha also announced Feed One (feedone.com), its humanitarian branch and new partnership with Convoy of Hope. “We want to partner with Convoy of Hope to give our students the opportunity to meet the real needs of children and be part of the global movement to eradicate hunger on the planet,” says Boston University Campus Pastor Lynn Breitenbach, who earlier joined other campus pastors in Haiti to launch the partnership.

Second-year graduate student Nikki Nuttal from the University of Illinois says the messages given during the summit were different than what she has heard before, calling them blunt and challenging.

“This is Jesus. This is the Bible,” she says, echoing the tone of the sermons. “This is what it says. Take it or leave it.”

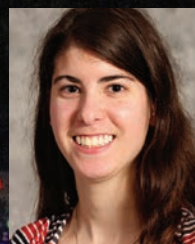
Kathryn Tetley, a sociology major and junior from the University of Missouri, says God is teaching her about the different ways and opportunities she can serve.

“God’s really been testing me on what I am willing to do and what I am going to do,” she says.

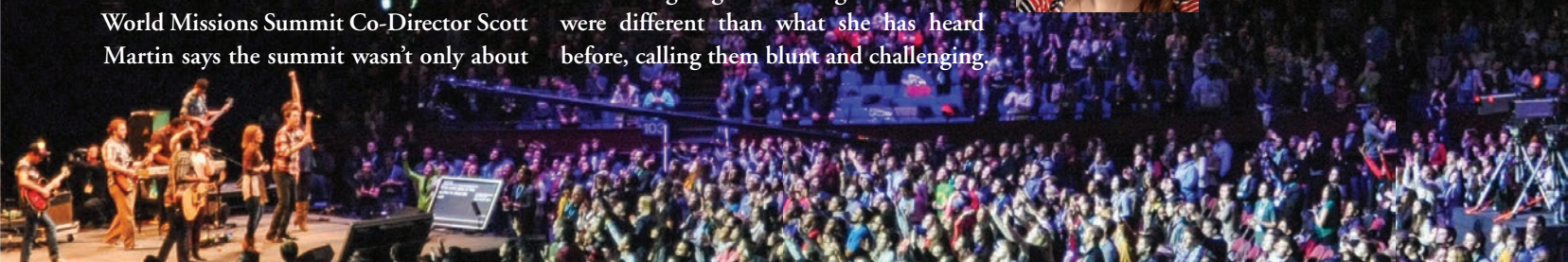
Eurasia Representative and Vice President of Global Teen Challenge Kevin Tyler says he loves watching the students accept the baton being passed down to them.

“This is the generation that is going to get it done,” he says about the students. “You can tell that God is at work.”

*Reprinted with permission by AG News.*



Melanie Lynch is Chi Alpha's Missionary Personnel and Records Coordinator.



# WORLD MISSIONS SUMMIT TESTIMONIES

“The relationships I’ve built with missionaries around the world will last me a lifetime. Some of them spoke straight into my heart and future, and God used them all weekend to impact me.”  
—Megan Smith, student at Michigan State University

“We brought five students with us who were a little apprehensive about TWMS, and we brought back five students ready to champion our campus for Christ! They understand that it all starts with the campus and reaching their friends. Although none of them signed up to give a year...they all committed to doing all that they can this next semester to reach their friends and classmates!”  
—Alex Graves, campus pastor at the University of Kansas

“It was an honor and a privilege to be a part of this amazing Summit. The hearts of all the college students and leaders were crystal clear evidence of what can happen when we get out of the way and let God move through us.”  
—Jeremy Stephens, Influence Resources author



# COMMITTING TO GO

Nii Abrahams is one of 1,148 students who committed to give a year and pray about a lifetime at the third World Missions Summit in Fort Worth, Texas this past December.

"I always knew I was called into full-time ministry," says Abrahams, a senior studying communication at the Missouri State University. Abrahams cut his holiday break two weeks

short and flew back from Ghana, where he was spending time with his extended family.

A few weeks prior to the Summit, Abrahams started questioning whether or not he was supposed to do full-time ministry, but once he went to the American Dream breakout session, God gave him confirmation to work for Missouri State Chi Alpha after his graduation in 2014.

College is seen as a way to fulfill the American Dream of making a lot of money in order to own a home and have many material goods, but the breakout session turned that mindset upside down. Instead, it focused on college ministry using a carnival and circus theme to portray the American Dream through different lenses. The experience showed the American Dream and the Gospel cannot co-exist because the dream promotes selfishness.

Abrahams realized he does not desire the cookie cutter lifestyle the dream encourages. "I knew that I couldn't live my life that way," he says. "This [campus ministry] was the only place I felt really called."

Abrahams is on leadership at Missouri State and learning to serve in that capacity has helped him define the faith he has had since he accepted Jesus as a child. He was raised by strong Christian parents who fully support him in his new American Dream. "They have known for a long time I wanted to go into ministry," he says laughing, "as long as I got my education."

After Abrahams receives his bachelor's degree, he will begin his career as a missionary. If you are like Abrahams and want to give a year of your life to missions in the United States, contact the department you wish to be a part of at 417-862-2781 ext. 3254 or go to [usmissions.org](http://usmissions.org). If you would like to give a year overseas, you can find more information at [wideopenmissions.org](http://wideopenmissions.org).

Melanie Lynch is Chi Alpha's Missionary Personnel and Records Coordinator.

## GIVING A YEAR IN THE UNITED STATES

If you wish to give a year in the United States, there are seven departments within U.S. Missions where you can serve. Contact the department you want to be a part of for a Missionary Associate application.

- **CHAPLAINCY MINISTRIES**  
[chaplaincy.ag.org](http://chaplaincy.ag.org)  
417-862-2781 ext. 3273
- **CHI ALPHA CAMPUS Ministries, U.S.A.**  
[chialpha.com](http://chialpha.com)  
417-862-2781 ext. 1425
- **MISSIONARY CHURCH PLANTERS AND DEVELOPERS**  
[plantersanddevelopers.ag.org](http://plantersanddevelopers.ag.org)  
417-862-2781 ext. 3252
- **INTERCULTURAL MINISTRIES**  
[intercultural.ag.org](http://intercultural.ag.org)  
417-862-2781 ext. 3256
- **U.S. MAPS**  
[usmaps.ag.org](http://usmaps.ag.org)  
417-862-2781 ext. 1389
- **TEEN CHALLENGE International, U.S.A.**  
[teenchallengeusa.com](http://teenchallengeusa.com)  
417-581-2181
- **YOUTH ALIVE**  
[yausa.com](http://yausa.com)  
417-862-2781 ext. 4084

## GIVING A YEAR OVERSEAS

If you would like to give a year outside the United States, there are seven departments within World Missions where you can serve. Contact the department you want to be a part of for more information on the process. You can also call World Missions at 417-862-2781 ext. 5010.

- **AFRICA REGION**  
[worldmissions.ag.org/regions/africa/](http://worldmissions.ag.org/regions/africa/)
- **ASIA PACIFIC REGION**  
[worldmissions.ag.org/regions/asiapacific/](http://worldmissions.ag.org/regions/asiapacific/)
- **EURASIA REGION**  
[worldmissions.ag.org/regions/Eurasia/](http://worldmissions.ag.org/regions/Eurasia/)
- **EUROPE REGION**  
[worldmissions.ag.org/regions/europe/](http://worldmissions.ag.org/regions/europe/)
- **LATIN AMERICAN AND THE CARIBBEAN REGION**  
[worldmissions.ag.org/regions/latinamcab/](http://worldmissions.ag.org/regions/latinamcab/)
- **NORTHERN ASIA REGION**  
[worldmissions.ag.org/regions/northernasia/](http://worldmissions.ag.org/regions/northernasia/)
- **INTERNATIONAL MINISTRIES**  
[worldmissions.ag.org/regions/international/](http://worldmissions.ag.org/regions/international/)

You will fill out an online application with the region and once you have passed the screening, placement and approval processes, you can begin raising your missionary budget, which is about \$1,500 to \$1,700 for a single person per month. You will also need to enroll under the Assemblies of God World Missions health insurance that will begin the day you leave for the mission field. Before you pack your bags, you are required to attend a Pre-Field Orientation (PFO) in Springfield, Mo., held three times a year.

The next step is to obtain final clearance, not to be confused with final approval, where you must have your monthly cash budget raised, meet the visa requirements for your assigned country, have a copy of your travel itinerary on file and be enrolled in the insurance program. Once you have completed these requirements, give a year, have a blast and pray about a lifetime.

# Feeding the HUNGRY



Ten years ago, I sat in a missionary service for Latin American Child Care and my heart was pierced for needy children. I wanted to do something significant for children that would help change their lives. I did sponsor a child that morning, and since then, I have looked for a way to help children without giving up my passion for equipping college students to change the world.

Convoy of Hope has a driving passion to feed the world. Chi Alpha has a driving passion to influence college students to transform their university, the marketplace and the world. These two passions come together beautifully in Feed One. I found a way to make a significant impact in the lives of children around the world and the college students I work with.

Feed One will give students the opportunity to feed, provide clean water and educate (in some cases provide housing) to needy children all over the world, for \$10 a month. Only \$10 a month! Our goal is to have as many students as possible, through Chi Alpha and Feed One, pledge to feed a child for a year.

In 2012, Convoy of Hope fed 125,314 children in seven countries around the world. We heard Hal Donaldson say, at TWMS3, that there are 100,000 children waiting to be fed in those countries. Then there are children in other countries whom Convoy of Hope wishes to help that they do not have the resources to reach yet.

Chi Alpha has approximately 24,250 students involved in our ministries across the US. If very Chi Alphan pledged, we could make a big dent in that waiting list and empower Convoy of Hope to realize their goals. But we want to offer this opportunity to everyone on your campus, not just Christians. Think of the impact Feed One could have if tens of thousands of students across the country helped feed one child for a year.

In partnering with Feed One, we give Christian and pre-Christian students on your campus the opportunity to join together to end hunger, and rally around a common cause. This is where Feed One becomes a powerful tool to changing the student body on our campuses. Feed One will help to be an advocate for the problem of hunger, providing education, materials and ideas for activities and events to promote the cause of ending extreme poverty in this generation. Through their involvement with Feed One, pre-Christians will be attracted to your Chi Alpha group and become curious about true justice and compassion based on the worldview of Jesus Christ.

This semester, Above the Haze, the Chi Alpha campus ministry at Boston University will be introducing Feed One to the campus. Feed One is providing all the materials, finances and equipment. We will not be handling any money; that will be done through a website and email, and Feed One will keep track of how many students pledge from BU. We are a test case, and we will iron out all the rough edges, so that next fall you can introduce Feed One to your campus.

The students we work with today want to change the world. They want to make a difference. They all want to feed or help hundreds of people, but they can't. But each student can feed one, and together we will feed not just hundreds, but thousands.



**Lynn Breitenbach loves Jesus, her family, great food, good music and Boston. She ministers at Boston University.**

# IMAGINE CONFERENCE CHALLENGES CHIA ALPHA STAFF TO DREAM BIG



More than 450 Chi Alpha Campus Missionaries from across the country gathered for a special one-day event in Fort Worth, Texas, on December 31 — following the third World Missions Summit — to begin the new year with a challenge of dreaming big and deep dreams for Chi Alpha.

The event, called Imagine, was based on Ephesians 3:20-21. It included special speakers, breakouts, worship, prayer and Texas-style food and fellowship. This was the third time and largest attendance ever for a one-day Chi Alpha staff conference.

The conference began with brunch and a video spoof of the popular “Gangnam Style” song, dubbed, “We got XA Style.” World Missions Summit 3 Co-Director E. Scott Martin enthusiastically reflected on the summit and the 1,148 students who responded to “give a year [to missions] and pray about a lifetime.”

Chi Alpha National Director Dennis Gaylor challenged campus leaders to dream big and deep dreams together, opening with Ephesians 3:20-21, which says, “Now to him who is able to do immea-

surably more than all we ask or imagine, according to his power that is at work within us, to him be glory in the church and in Christ Jesus throughout all generations, for ever and ever! Amen.”

“We are essentially poised for greatness or decline depending on how we move forward in God’s dreams for us,” Gaylor said, and compared the human life stages to organizational development.

As a vibrant and growing organization, Gaylor said Chi Alpha must find the delicate balance between spiritual vitality and effective organization. Gaylor challenged the campus staff to commit themselves to God’s Word, prayer and to live consecrated lives in the dream God has for Chi Alpha’s future. He then announced XAPray, a call to weekly prayer on campus for Chi Alpha nationwide.

Guest speaker, Northwest University Provost Jim Heugel, also used the Imagine theme to outline what Chi Alpha can be.

“It was good listening . . . about dreaming what Chi Alpha can be and look forward to the potential,” Clemson University Senior Campus Pastor Joe Holloway said.



Sara Good, a staff member from Idaho State University, expressed, “It is exciting to see where we’ve come and the impact of the groups.”

During the event, eight different breakout sessions were offered to leaders to develop and hone their skills, with the activities concluding with a Texas-style BBQ and other fun activities.

Five campus missionaries were also recognized at the conference, receiving the Missionary Service Award for 30 years of campus ministry service: Eric Treuil of University of Louisiana-Lafayette, Bob Elfers of Eastern Washington University, Michael Mowry of Central Washington University, Resource Director Mike Olejarz and Support Raising Specialist Trainer Gregg Glutting.

For more information on Chi Alpha Campus Ministries, see its website at <http://chialpha.com>.

*Reprinted with permission by AG News.*

**Melanie Lynch is Chi Alpha’s Missionary Personnel and Records Coordinator.**



## A BIG THANK YOU

The Missionary Service Award is given to Chi Alpha missionaries who have served for 30 years. The award was given to five people during Imagine:

- **BOB ELFERS**  
Eastern Washington University, 30 years
- **GREGG GLUTTING**  
Support Raising Specialist Trainer, 30 years
- **MICHAEL MOWRY**  
Central Washington University, 31 years
- **MIKE OLEJARZ**  
Resource Director, 30 years
- **ERIC TREUIL**  
University of Louisiana-Lafayette, 30 years



## AND THE ALPHIE GOES TO...

The (Chi) Alpie Award is given to Chi Alpha missionaries just for the heck of it. Staff members vote for their peers in different categories. The Alpie Award was given during Imagine to:

- **JASON AND JOSH BELL**  
Chi Alpha couple or pair most likely to be contestants on next season’s Amazing Race
- **HARVEY HERMAN**  
Chi Alphan most likely to publish an Exhaustive Concordance or Expository Dictionary of the Bible
- **RONNIE HOOVER**  
Chi Alphan most likely to replace the Travelocity Gnome
- **TIM AND MELISSA KERN**  
Best achievement, by a married couple, in repopulating the planet
- **DICK SCHROEDER**  
Chi Alphan least likely to be hired by Google, Facebook, Apple or any other tech driven company
- **ERIC TREUIL**  
Chi Alphan most likely to be accepted into the Julliard School for the Performing Arts

# TTU

**JUNE 16-22**

Reach the

# 2013



**World-class training**  
 for an effective ministry in the university setting.  
[chialpha.com/rui](http://chialpha.com/rui)

Voted best kept secret in Chi Alpha (by the XA Expeditions Staff)  
[xaexpeditions.com](http://xaexpeditions.com)



**June 16-19, 2013**  
**Drury University**  
**Springfield, MO**



Getting God's heart for the Nations

# INFUSION

And taking it back to our campus

NONPROFIT ORG.  
 U.S. POSTAGE  
**PAID**  
 PERMIT NO. 48  
 SPRINGFIELD, MO

1445 N. Boonville Ave.  
 Springfield MO 65802



The General Council of  
 The Assemblies of God