

# CONNECTION

chi alpha

VOLUME 5 ISSUE 4 SPRING 2013

## DREAMING TOGETHER OUR BIGGEST AND DEEPEST *Dreams*

By Dennis Gaylor

*Happy Retirement!*

THANK YOU DENNIS  
FOR **35 YEARS**  
OF SERVICE TO  
COLLEGE STUDENTS!

"Now to him who is able to do immeasurably more than all we ask or imagine according to his power that is at work within us, to him be glory in the church and in Christ Jesus throughout all generations."

Ephesians 3:20-21

Imagine what God can and will do as we allow the Holy Spirit's power to operate in our personal lives and in the ministry life of Chi Alpha. God has infinitely more in store for this Chi Alpha Nation than our collective imaginations could ever perceive, desire or ask for in our prayers.

What do you and I hope and pray for Chi Alpha?

What do you believe God for? What are your dreams?

WHY DREAM? WHY IMAGINE?

First, God desires for us to dream with Him as part of His design to partner with us to fulfill His purposes in Chi Alpha for His honor and glory.

Acts 2:17-18 declares that in the last days God says, "I will pour out my Spirit on all people, your sons and daughters, your young men, your old men, without barriers of gender, age, or status to prophesy, envision, and dream."

If we believe we are in the last days and the greatest revival on our college campuses is yet to come, and we have been given the Holy Spirit to empower us to dream, then what will we embrace as the big and deep dreams of God for the future of Chi Alpha?

CONTINUED ON PAGE 3 >



**U.S. MISSIONS**

*...that none perish*

# EDITOR'S LETTER

"We have a dreaming nature," says Dutch Sheets in *Dream*. "We inherited this part of our disposition from our Creator. God created us in His image and likeness so our hearts could relate to His and in order that His dreaming heart could find millions of expressions. We were designed to dream, and we must dream—both for ourselves and for God. In fact, if you don't dream with Him, ... you'll never achieve your destiny."

When I first got involved in Chi Alpha at the local level, the campus unrest, anti-establishment, anti-war movement and student demonstrations were winding down. In its place the Jesus movement exploded on the West Coast and swept across the United States and the Charismatic renewal began at the University of Notre Dame and the spiritual gifts spread rapidly to mainline denominations and college campuses.

Even though students were getting saved and being baptized in the Holy Spirit, a generation gap developed because their freedom of expression in dress made them suspect—they didn't look Christian. Thus enters Chi Alpha in the late 1970s. We were a motley crew wearing overalls and sandals or barefoot, and had long hair and beards; acoustic guitars were favored over hymns and organ music.

I came to Springfield, Missouri to work in Chi Alpha in 1978 at age 29. A number of the young men and women who got radically saved on campus were determined to stay after graduation to live and share the gospel to any who would listen. Because of our looks and behavior, some church leaders questioned whether we really loved God, but regardless, we began growing in our walk with Jesus.

I think many Chi Alpha leaders early on were misunderstood and marginalized. Most were single, lived very frugal lives, had cars that didn't work and lived on very little income. It was nearly impossible to do campus ministry and be married. My dream and passion was to see young single men and women, married couples and families do campus ministry effectively and as a long term career. Chi Alpha personnel would be recognized and esteemed as missionaries and their dreams from God could be realized.

This dream was fulfilled in the 1990s after Chi Alpha relocated to AG U.S. Missions. This gave Chi Alpha the opportunity to begin granting national missionary appointment to those called to the campus. Today we have several hundred quality leaders and vibrant campus ministries nationwide who are having a powerful impact for Jesus on our universities.

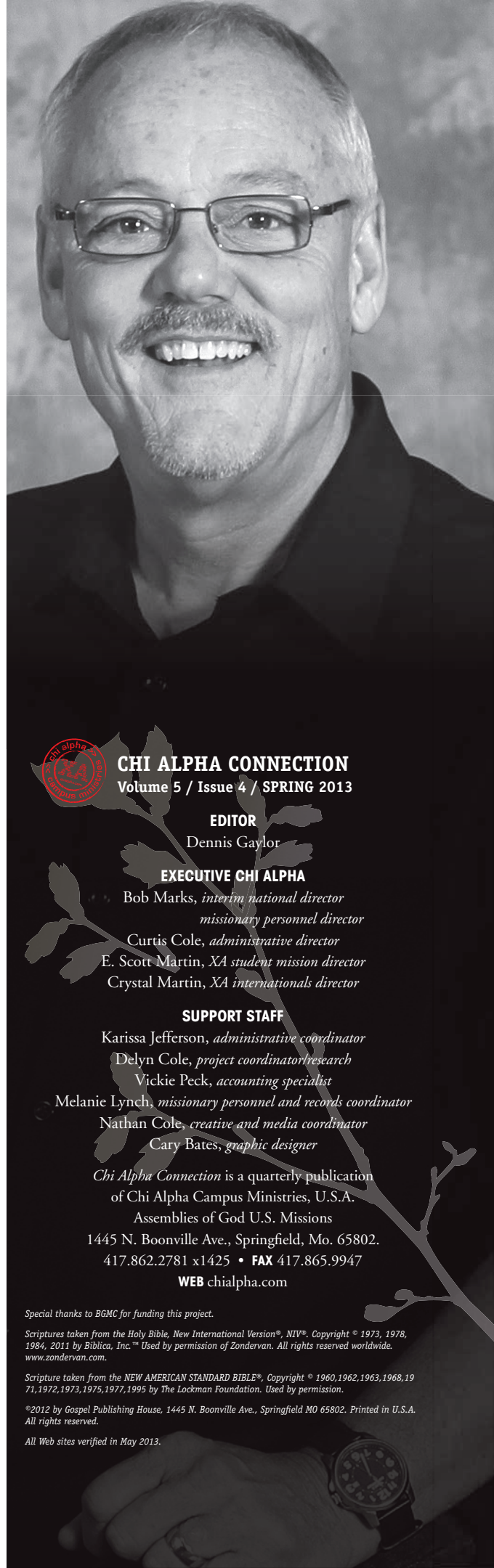
"The journey of life is meant to be a dream quest; finding what your Maker has dreamed for you brings life's ultimate satisfaction and should be life's ultimate pursuit," says Sheets. "God dreamed dreams for us before we were even born, then skillfully wove them into our DNA as we were created, along with the ability to find and fulfill them. His destiny for you will be the sum of those dreams."

So, with lots of fulfillment seeing what God has done, Barbara and I have decided to retire as this school year ends. I leave my position as national director of Chi Alpha Campus Ministries April 12.

It is time for Barbara and I to dream some more. Acts 2:17 says, "...old men will dream dreams." We cannot say yet what God has for us in the years ahead, but we are satisfied that our dream from the beginning has been realized and God will plant new dreams in us for the future.

We will continue to dream and pray that Chi Alpha finds every means to engage students on our campuses with the powerful gospel and shake up our institutions of higher learning so students, faculty, staff and administrators start asking the big and central questions of life. We will pray for revival on our campuses.

I conclude by asking, what is the new dream for Chi Alpha and you?



## CHI ALPHA CONNECTION

Volume 5 / Issue 4 / SPRING 2013

### EDITOR

Dennis Gaylor

### EXECUTIVE CHI ALPHA

Bob Marks, *interim national director*  
*missionary personnel director*

Curtis Cole, *administrative director*

E. Scott Martin, *XA student mission director*

Crystal Martin, *XA internationals director*

### SUPPORT STAFF

Karissa Jefferson, *administrative coordinator*

Delyn Cole, *project coordinator/research*

Vickie Peck, *accounting specialist*

Melanie Lynch, *missionary personnel and records coordinator*

Nathan Cole, *creative and media coordinator*

Cary Bates, *graphic designer*

*Chi Alpha Connection* is a quarterly publication  
of Chi Alpha Campus Ministries, U.S.A.  
Assemblies of God U.S. Missions

1445 N. Boonville Ave., Springfield, Mo. 65802.

417.862.2781 x1425 • FAX 417.865.9947

WEB [chialpha.com](http://chialpha.com)

Special thanks to BGMC for funding this project.

Scriptures taken from the Holy Bible, New International Version®. NIV®. Copyright © 1973, 1978, 1984, 2011 by Biblica, Inc.™ Used by permission of Zondervan. All rights reserved worldwide. [www.zondervan.com](http://www.zondervan.com).

Scripture taken from the NEW AMERICAN STANDARD BIBLE®. Copyright © 1960, 1962, 1963, 1968, 1971, 1972, 1973, 1975, 1977, 1995 by The Lockman Foundation. Used by permission.

©2012 by Gospel Publishing House, 1445 N. Boonville Ave., Springfield MO 65802. Printed in U.S.A. All rights reserved.

All Web sites verified in May 2013.

## Second, we dream to know God's heart.

In *Change the Culture, Change the Game*, Roger Conners says, "Once you and I clearly define the targets—the results we want; [students becoming followers of Jesus Christ] then we must move quickly to build a [Chi Alpha] culture that produces the right experiences, beliefs and actions (behaviors) to achieve those results."

God's target—His Heart—is John 3:16. "For God so loved the world that He gave His only Son that whoever believes in him will not perish but have everlasting life."

The student on campus is the target of God's heart. Whatever we dream for Chi Alpha centers on that student who needs to know and grow in Christ Jesus.

## Third, we dream for the favor and grace of God to fall on Chi Alpha.

According to Joe Castleberry, in his book *Your Deepest Dreams*:

*"True fulfillment comes when we discover the overarching deep dream God intends for us. The dream involves goals, dreams, destiny and the development of moral character."*

God has a unique dream for Chi Alpha. God has a unique dream for each of us in the gifts and roles we play in Chi Alpha. When we find and embrace our God-given dream, we find the greatest possible fulfillment, meaning and purpose. We are alert, awake, and alive spiritually and listening for God's voice, not ours.

**In the 1970s**, we only had a handful of district Chi Alpha leaders in 9-10 states. They crisscrossed their state, shared a vision for Chi Alpha in churches, met students, and assisted them in organizing student led chapters on campus.

We even had fewer local campus ministers—one in Washington, Louisiana, Montana, Missouri, Arkansas, and Texas.

The role of a campus minister was only beginning to emerge in the Assemblies of God.

**By the 1980s**, God began speaking to recent Chi Alpha graduates about giving back to the campus where many had come to faith, and several became campus ministers. We started training these guys the best way we knew how.

**From the time** I arrived in Springfield, Missouri, my dream for Chi Alpha was to see young men and women, singles and marrieds, and families who were called to campus ministry be able to do Chi Alpha as a career, as a life-long calling.

Other than a few innovative districts, there really was no one system in place for doing campus ministry.

After a study in 1986 of Chi Alpha that resulted in a historic move from youth ministry to U.S. Missions, Chi Alpha got a major boost.

**By 1992**, for the first time we began appointing campus missionaries. We started small with three couples. In 2012, we had 318 career nationally appointed campus missionaries and spouses serving across the U.S. Another six percent of our personnel are district approved and eight percent are church staff.

We have also added another personnel category, the campus missionary associate, and this school year we have almost 300 affiliated serving Chi Alpha.

**Today, we have career missionaries serving on campuses nationwide. A dream fulfilled!**

## WHAT IS NEXT?

Look at the **life cycle** of an organization as compared to the stages of a human life.

**Figure 1: Represents an illustration of Organizational Development likened to stages of human development.**

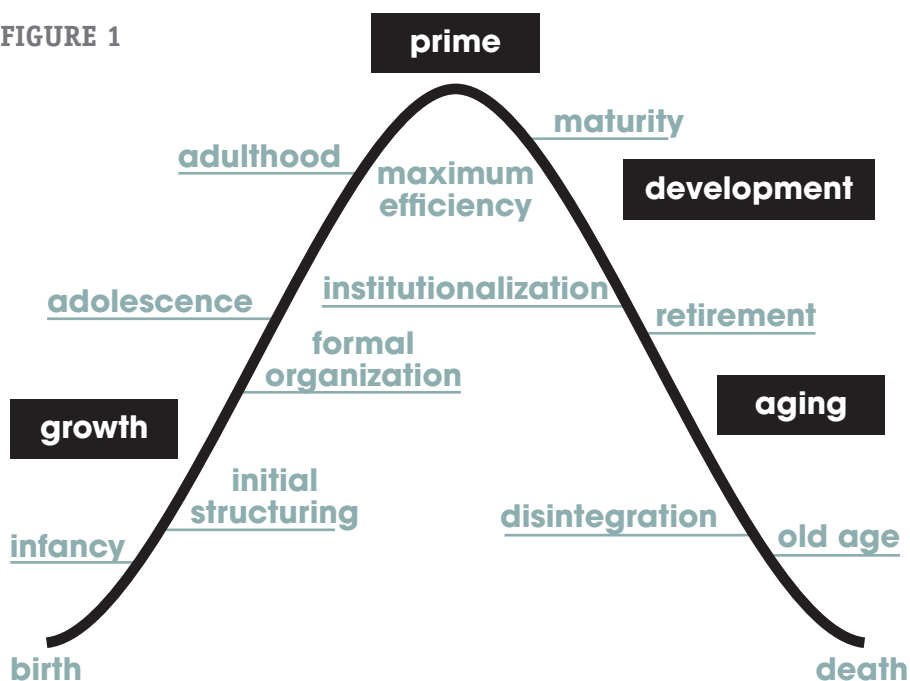
The bell shaped curve represents an organization's beginning and ending, and is similar to the birth to death of a human being.

On the outer side of the curve, you can follow the sequence from birth, infancy, adolescence, adulthood, maturity, retirement, old age and death as the stages of human life. It shows growth, the prime of life, development and aging.

CONTINUED ON PAGE 6 >

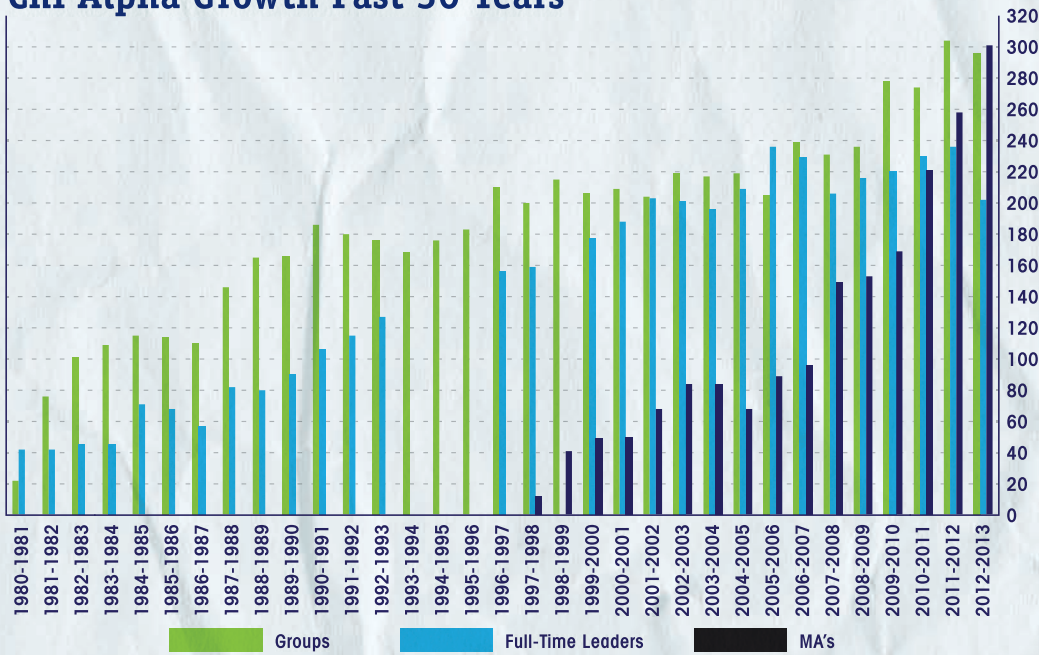
## Organizational Life Cycle (and Stages of Human Development)

FIGURE 1



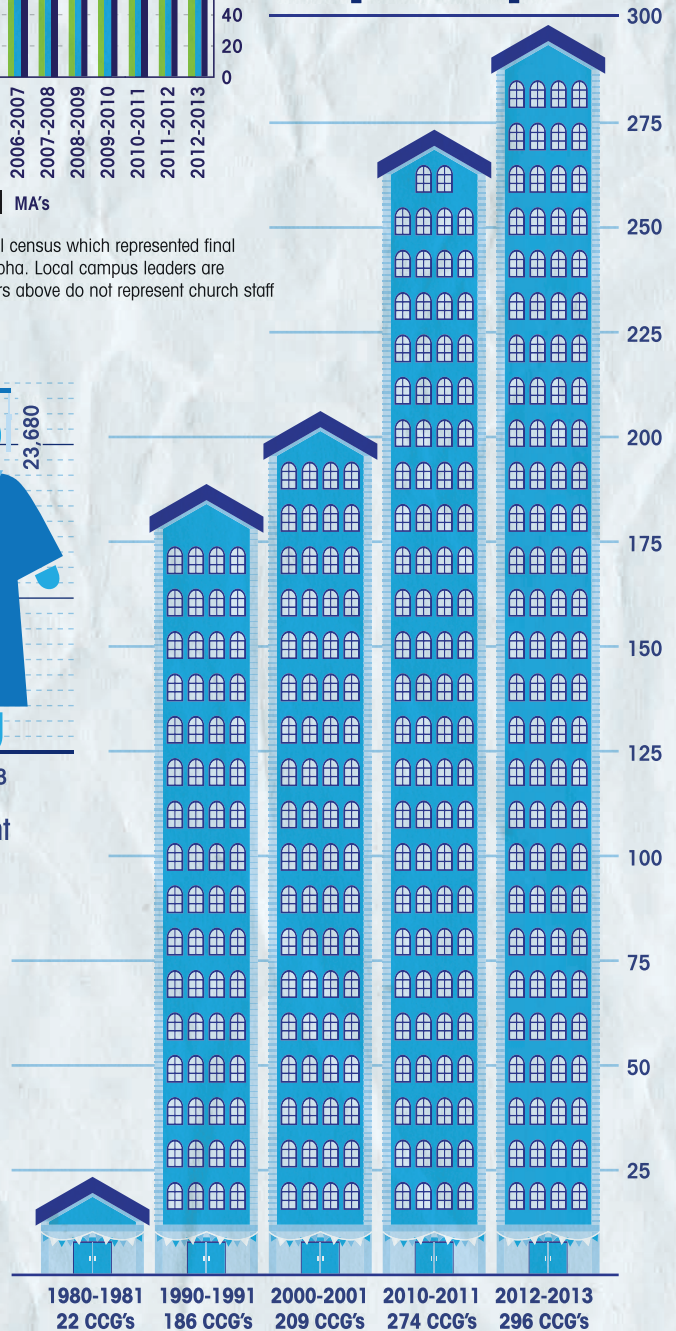


## Chi Alpha Growth Past 30 Years



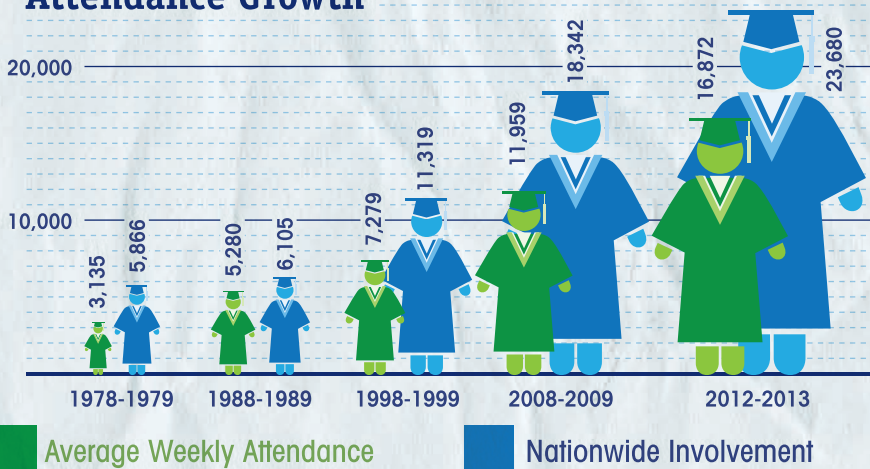
**SOURCE:** Taken from the Chi Alpha Staff and Group Directories published each school year and the annual census which represented final chartered group numbers. Beginning in 1980 chartering was required to be officially recognized as Chi Alpha. Local campus leaders are counted as units and only full-time campus leadership. The numbers do not include spouses. The numbers above do not represent church staff serving campus ministry which would add another 30-40 per year.

## Chi Alpha Chartered Campus Groups



**SOURCE:** Taken from the Chi Alpha Staff and Group Directories published each school year and the annual census which represented final chartered group numbers. Beginning in 1980 chartering was required to be officially recognized as Chi Alpha.

## Attendance Growth



## International students active in XA reported in the annual XA Census



Thank you for the years of service to Chi Alpha! As said by so many, words cannot express fully what is in my heart. I am indebted to you both-your life testimony has affected me and all that know you. Thank you for the years invested in me as an employee of National Chi Alpha. I have so many great memories of those years! Thank you for the example of living life transparently and openly and bathed in prayer. May God continue to use you both mightily in His Kingdom as you begin the next chapter.

**Kenna Bishop,**  
Former National Office Staff

**Wow. Sometimes "thank you" just doesn't seem adequate.**

**Much of what we love about this amazing XA family is due to your leadership Dennis and Barbara. You leave a remarkable legacy and we love you both.**

**Mark McKeel**  
Michigan State University

**Thanks for reminding me of the importance of prayer and reliance upon God as our ultimate source of direction and strength through difficult times. You will be incredibly missed!**

**The Cole fam**  
Ephesians 3:20-21

Blessings to you, Dennis and Barbara! Sherilyn and I love you guys and thank God that our lives have intersected together. I remember begin in Spfd the summer of 1979 when we bid farewell to David Gable, then the torch was passed to you! Love you, big guy!

**Bob Cook,**  
Colorado Pastor

**Thanks Dennis for championing Chi Alpha all around the U.S. and beyond for these 35 years! You have been such a great leader and have always been so good at loving everyone in the family of XA from the students to the newest CMA or Intern to the veteran campus pastor. We love you Dennis and Barbara!**  
**Tim Kern, Carroll College**

**We are so grateful for your leadership and your lives that we have been privileged to share through Chi Alpha. You are wonderful examples and truly demonstrate Christ-like qualities.**

**Curtis and Sara Hobbs, Poland**

Thank you so much for your leadership and investment in our lives and in Chi Alpha at large for the past 40 years.

Generations of students and missionaries say thank you for your vision, heart, prayer, and passion. You have 'spent and been spent' for Jesus and for His work in this world.

You have shaped Chi Alpha, though the years, into the leading Pentecostal campus ministry in America. Multiple thousands have come to Christ, been filled with the Spirit and healed. More over a multitude are Jesus' disciples, committed to community, and His work in the marketplace and world.

Please step back for a moment and breathe that in.

Thank you, thank you, thank you!

**Curtis and Delyn Cole**  
National Office Employees

**D & B ARE THE BEST - LOVING GOD AND LOVING PEOPLE - LONG DISTANCE "RUNNERS" FOR JESUS - PERSEVERING THROUGH HEARTBREAK - KEEP SMILING EVEN WHEN IT HURTS - HAVE LED XA THRU GREAT CHANGES FOR GOOD - KEEP ON TRUSTIN'!!!**

**WE LOVE YOU, JIM & BETTY HALL**

Thanks so much for your years of service and leadership. You both are among the most amazing people I know having been through many trials and yet always coming through them with faith and grace. Dennis, you define servant-leadership, and you are one of the most humble people I know. You have not ever tried to be in the spotlight even though you were the national director. You have put up with hundreds of type A, very opinionated Chi Alpha directors (not me of course) and balanced that with staying in the good graces of the Assemblies of God (which would normally be an impossible task). Chi Alpha and the Assemblies of God will forever be impacted by the growth of XA under your leadership. I am very honored and humbled to count the Gaylors as my friends.

Congratulations and THANK YOU, Dennis, for a pioneering ministry that effectively placed the Good News of Jesus Christ on many secular campuses! You ADVANCED the Kingdom, and that is no small thing!! Blessings to you and Barbara today and through all the good years to come!

**Terry Raburn,**  
Peninsular Florida  
District Superintendent

Love is a verb, Coach Mark  
Eph. 3:20 and 3rd John 2

**Mark Randall**  
Murray State University

**I simply cannot imagine Chi Alpha without you as the director! Thank you so much for your faithful service, your leadership, and your prayers. We will be praying for you in this transition!**

**Chris and Julie Manthey**  
University of Minnesota- Twin Cities

Organizational stages are listed inside the curve as initial structuring, formal organization, maximum efficiency, institutionalization, and disintegration.

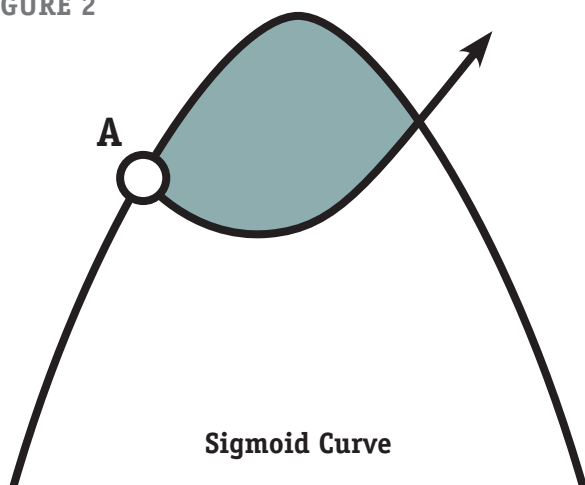
Organizations have life cycles in their development and decline as we do.

**Figure 2: Represents the “S” Curve or Sigmoid Curve.**

The Age of Paradox, Charles Handy

When we look at stages in an organization, it is important that you understand what is called the S or Sigmoid Curve as it relates to organizational development.

**FIGURE 2**



Organizations want to start a new curve preferably while the first one is still rising; otherwise, they can begin to erode.

Organizations want to begin with a new initiative or venture before the old one starts to plateau and decline.

It takes a while for a new curve to pick up momentum and the first one to wane.

For a while during the shade zone, new ideas and new people will have to co-exist with old ideas.

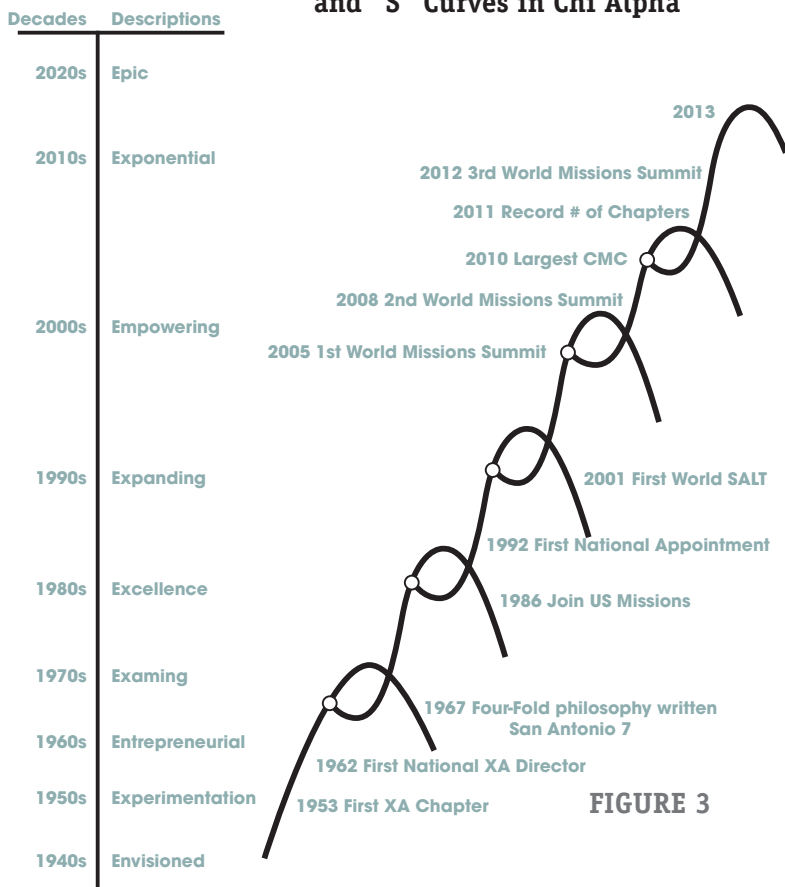
**When an organization begins redevelopment or new vision, it is essentially starting a new life cycle.**

If the vision is strong enough, it can not only reverse stagnation, but take the organization back to the left side of the growth curve—the Sigmoid or S curve concept in action.

**Figure 3: A look at Chi Alpha’s Cycles, 1940-2012.**

This graph represents Chi Alpha through the decade with descriptions for each decade listed vertically on the left side of the chart: Envisioned in the 1940s, Experimentation in the 1950s, Entrepreneurial in the 1960s and all the way to Empowering in 2000, Exponential 2010, to Epic by 2020.

**Decades, Descriptions, and “S” Curves in Chi Alpha**



**FIGURE 3**

Also the numerous “S” curves results from events and initiatives that renewed our vision and kept Chi Alpha advancing as a national movement.

For example, in 1977, we developed our fourfold philosophy of ministry.

In 1986, Chi Alpha became a department in U.S. Missions, and began national appointment of Chi Alpha personnel in 1992.

The First World SALT in Los Angeles kicked off the new millennium.

Two years ago, we had our largest Chi Alpha staff gathering.

**National Chi Alpha is, at this moment, near the top of another curve and acutely aware of the delicate balance between spiritual vitality and efficient organization.**

We are essentially poised for greatness or decline depending on how we move forward in God’s dream for us.

There is absolutely no doubt in the minds of any of us who serve in Chi Alpha that from the beginning seeds of Chi Alpha’s existence, God has been on the move dreaming His dream for us, laying biblical foundations, growing, building, maturing and producing fruit through his power and your faithful service.

## WHAT DOES GOD DREAM FOR US?

### First, God's dream for Chi Alpha is His dream for all humanity.

It has not changed. And, if we lose sight of it, if we fail to recognize and submit to its driving force in our lies, we will miss what is coming. We won't be ready. Here it is:

#### HIS PURPOSE:

The fields of our colleges and universities are ripe for harvest.

#### HIS HEART:

God promises that in the last days He will pour out His Spirit on all flesh. We must expect a coming student revival so powerful that it is immeasurably more than we can imagine or hope for.

Students all over this nation and world will raise the banner of Christ' love, salvation and infilling of the Holy Spirit over all colleges and universities so that Jesus can be glorified.

#### HIS PARTNERS:

God needs this Chi Alpha Nation, leaders who seek to be filled and equipped in the Holy Spirit, to partner with Him to fulfill His purposes.

### Second, God wants us to see His dream all over again.

His dream has not changed, but perhaps we have. He wants us to see it like it was the first time we have ever seen it. He wants us to hold it, envision it, imagine it, heart it, smell it and prophesy it. He wants His dream to permeate everything in our planning and partnership with Him.

Third, God's dream for us always leads us back to our spiritual foundations before we move forward in the spirit.

We need to once again embrace our three spiritual disciplines like the coming great revival depends on it.

#### 1. RENEW OUR COMMITMENT TO GOD'S WORD.

Claim the Word of God over this Chi Alpha Nation, your ministry and your personal lives. Give to God a renewed effort the create time and space in which you can hear the Word and He can act. Allow the Word to help you see God's dream for Chi Alpha.

#### 2. PRAY.

2 Chronicles 7:14 says, "If my people who are called by my name will humble themselves and pray and see my face and turn from their sinful ways, then I will hear from heaven, forgive their sin, and heal their land." We are to examine ourselves and repent of whatever it is that keeps us going down the path of our own selfish ways. We are to seek God and pray

that He will bring revival and restoration to the campus. We pray for the power and presence of the Holy Spirit in the life of Chi Alpha.

We are to pray against the devil's schemes that are always out to steal, kill, destroy or thwart God's purposes. We can expect this when God is about to do something more than we can imagine. God says we win when we pray.

What would happen if every campus group scheduled a regular prayer time—"where two or three [students] come together in Jesus name,—He is there with them."

Imagine if the God of the universe meets weekly with a small group of praying students in the dorms, cafeterias, rec centers, student unions, classrooms and coffee bistros on campus, what might happen?

Mark Batterson, in *The Circle Maker*, says, "Prayer is the answer to our biggest dreams and greatest fears."

#### 3. LIVE A CONSECRATED LIFE OF SERVICE TO GOD.

A consecrated life is a Spirit-led life. A consecrated life is a holy life.

If we are going to be partners with God in His dream for us, we are to lead lives that are examples to others of the fruits and gifts of the Spirit. We want to live lives of the Spirit that will grow and advance Chi Alpha as God intends.

If we are self-ambitious or self-serving, have animosity against one other, if we are judgmental, critical, cynical, or prideful; if we have unwholesome junk in our heart, this will divide us and can destroy Chi Alpha and destroy what God has imagined for us.

## SO LET'S DREAM BIG AND DEEP

Each of you has your story and dreams. Thousands upon thousands of students who have experienced the love of Jesus Christ through Chi Alpha have their eternal stories to tell because of your labors in Christ and Christ's power at work in them.

Your campus is the harvest field of hope to share the message of the good news of salvation, healing and fullness of the Holy Spirit with American and international students.

To those of you who have chosen Chi Alpha as your dream and God's dream—THE BEST IS YET TO COME.

Chi Alpha, let's dream together our biggest and deepest dreams.

**"DREAMING TOGETHER OUR BIGGEST AND DEEPEST DREAMS" WAS A MESSAGE DENNIS GAYLOR, NATIONAL DIRECTOR, GAVE AT THE DECEMBER 31, 2012 CHI ALPHA LEADERS IMAGINE CONFERENCE IN FORT WORTH, TEXAS TO 450 CHI ALPHA STAFF.**

